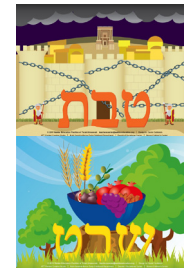




Walder Education of Torah Umesorah

January 2019 Teves-Shevat



Temporary Location: 5665 N. Jersey
 847-674-0800
 teacherscenter@waldereducation.org
 www.waldereducation.org

Quick Tip


Teaching Strategies: Four Corners

Studies show that acquisition of knowledge and skill is more effective through kinesthetic learning.

Kinesthetic learning is learning through movement or physical activity.

Four Corners is a learning strategy that employs kinesthetic learning. It also involves critical thinking, decision making, listening and communicating.

- Ask a question or make a statement related to the topic.
 E.g., 1. *Do we always have to give tzedakah to everyone who asks?*
 2. *The Torah completely forbids lying.*
- If you ask a question, post signs of 4 different possible answers, one at each corner of the room. If you make a statement, post the signs: "Strongly Agree", "Agree", "Disagree", and "Strongly Disagree", one sign at each corner of the room.
- Give students time to think about their answers.
- Students walk to the posting they agree with and take a few minutes to discuss their answers and reasons with the other students in their group. If a group is too large, divide it into groups of 3-5.
- Students tell or write a summary of their group's response.
- The class then discusses each group's response and reasons.

Sun 10-2:00	Mon 10-4:00	Tues 10-4:00	Wed 7-9:00 pm	Thurs 10-4:00	Fri Closed	Shabbos Closed
GET ALL YOUR CLASSROOM TU B'SHEVAT NEEDS AT WALDER EDUCATION OR CHECK OUT WWW.WALDEREDUCATION.ORG						
		1 Closed New Year's Day	2	3	4  Candle Lighting 4:14 PM	5 Vaeira
6	7 Rosh Chodesh Shevat	8	9	10	11  Candle Lighting 4:21 PM	12 Bo
13	14	15	16	17	18  Candle Lighting 4:29 PM	19 Beshalach
20	21 Tu B'Shevat	22	23	24	25  Candle Lighting 4:38 PM	26 Yisro
27	28	29	30	31		

Visit us at WalderEducation.org

To get on our mailing list and receive our calendars and announcements,
 call 847-674-0800 or email us teacherscenter@waldereducation.org

A beneficiary of the Foundation for Learning and Development

Candle lighting times from OU.org